

# Gd-Li (Gadolinium-Lithium)

H. Okamoto

No information concerning the Gd-Li phase diagram was available at the time that [Massalski2] was published.

Figure 1 shows the Gd-Li phase diagram calculated by [2001Kev]. Experimental data points for this system are sparse, and only one data point obtained by [1998Gan] was used to determine the monotectic temperature of 902 °C. More data points are needed to confirm the validity of this calculated phase diagram.

## References

**1998Gan:** I.N. Ganiev, K.M. Nazarov, and M.D. Badalov, *Metal*, (No. 6), 1998, p 109-112

**2001Kev:** D.G. Kevorkov, J. Gröbner, R. Schmid-Fetzer, V.V. Pavlyuk, G.S. Dmytriv, and O.I. Bodak, The Ternary Gd-Li-Mg System: Phase Diagram Study and Computational Evaluation, *J. Phase Equilibria*, Vol 22 (No. 1), 2001, p 34-42

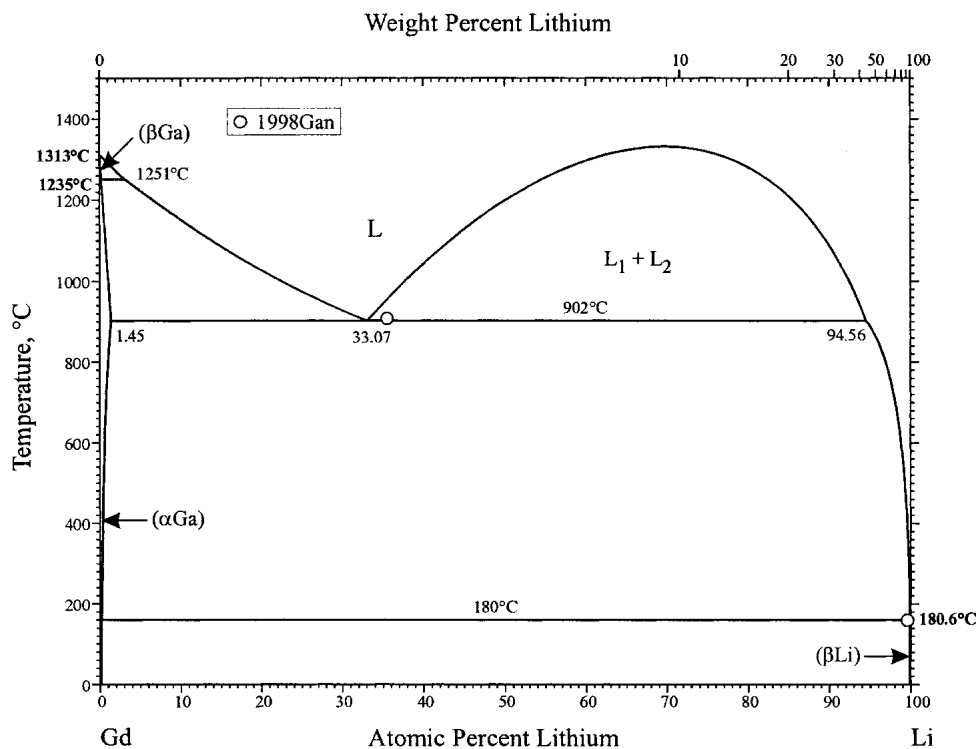


Fig. 1 Gd-Li phase diagram